



Valley Pain Specialists, PC

Consultants in Acute and Chronic Pain Management

Steven Mortazavi, M.D.

Anish S. Patel, M.D.

Michelle Peartree, PA-C

Kristin Severinsen, PA-C

NEWSLETTER



VOLUME 3

NUMBER 10

Spinal Cord Stimulation (SCS): Considerations & Indications

Managing chronic pain is one of modern medicine's greatest challenges. Pain that is severe, persistent and unresponsive to medical and surgical management can be debilitating for the patient and the family. Spinal Cord Stimulation is a widespread modality utilized by Pain Specialists for properly selected patients.

Originally introduced in the 1960's, SCS targets the dorsal column/medial lemniscal system to modulate the perception of pain. The tingling sensation felt with stimulation paresthesia is the mechanism by which the chronic pain-signaling pathway is inhibited. SCS Therapy has had resurgence in the last ten years, mostly due in part to technological advances, better patient selection criteria and a more thorough understanding of chronic pain pathophysiology.

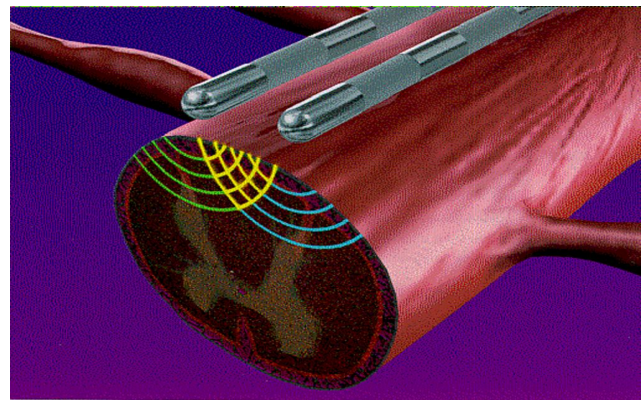
SCS therapy is often considered a last resort and performed as a final attempt to improve the patient's quality of life. The objective is not a cure, but to reduce pain to a manageable level.

Spinal Cord Stimulation may be utilized for numerous chronic pain conditions. Patients most likely to benefit include those with: chronic angina, peripheral vascular disease, failed back surgery, syndrome, cauda equina damage, post amputation

pain, Complex Regional Pain Syndrome I and II and peripheral nerve lesions.

Patients who may also benefit from SCS include: post-herpetic neuralgia, phantom limb pain, partial spinal cord injury, brachial plexus damage, nerve root and peripheral nerve avulsion injury.

Evaluation and consideration for SCS treatment is offered at Valley Pain Specialists. Patients who are deemed possible candidates for SCS undergo psychological screening as well as a temporary placement of a "trial" SCS neuroelectrode. Permanent SCS is performed under light anesthesia on an outpatient basis if patients respond well to the trial screening.



For Information and Referrals:

(610) 954-9040

Caring

Compassion

Commitment